

A scenic view of a beach with a large rock archway and a cliffside. The beach is sandy and curved, with several people walking or sitting on it. The water is clear and blue, transitioning from a shallow turquoise near the shore to a deeper blue further out. A large, grey rock formation with a natural archway stands on the right side of the beach. To the left, a steep, grassy cliffside descends towards the water, with a stone staircase visible on its face. The sky is bright blue with scattered white clouds.

Dorset & The South West of England

5 DAY CULTURAL - EDUCATIONAL - HISTORICAL PROGRAMME



DAY 1. DORSET AND THE SOUTH WEST OF ENGLAND

Acclimatisation day

We suggest a relaxing day with a visit to either Boodles the luxury jeweller or Holland and Holland the gun makers and outfitters. Established in 1798 Boodles diamond and fine gem merchant has a selection of some of the most beautiful, rare and valuable jewellery in the world. Their representatives will show and tell

the stories of some of their most iconic pieces including their rare yellow diamond pendant. Holland and Holland was established in 1835 and has one of the finest gun rooms in the world and supplies sporting rifles to the aristocracy and the Royal Family and are purveyors of the finest countryside clothing.



DAY 2. DORSET AND THE SOUTH WEST OF ENGLAND

Portsmouth & The Historic Naval Dockyard

By luxury people mover to Portsmouth which was sunk in 1545 and lay beneath the sea until she was recently raised, restored and installed in this truly wonderful museum. This is a full day visit and will be followed by a relaxing day at either the Dorset House in Lyme Regis or the Pig on The Beach near Swanage on the Dorset coast. Both lovely boutique hotels. The home of the magnificent Royal Naval Dockyard. This is a journey into history and our guests will literally be taken on a journey through time. Step on board historic ships and learn about the British Royal Navy of the past present and future. We will visit the amazing ship the Mary Rose, Henry VIII's favourite warship

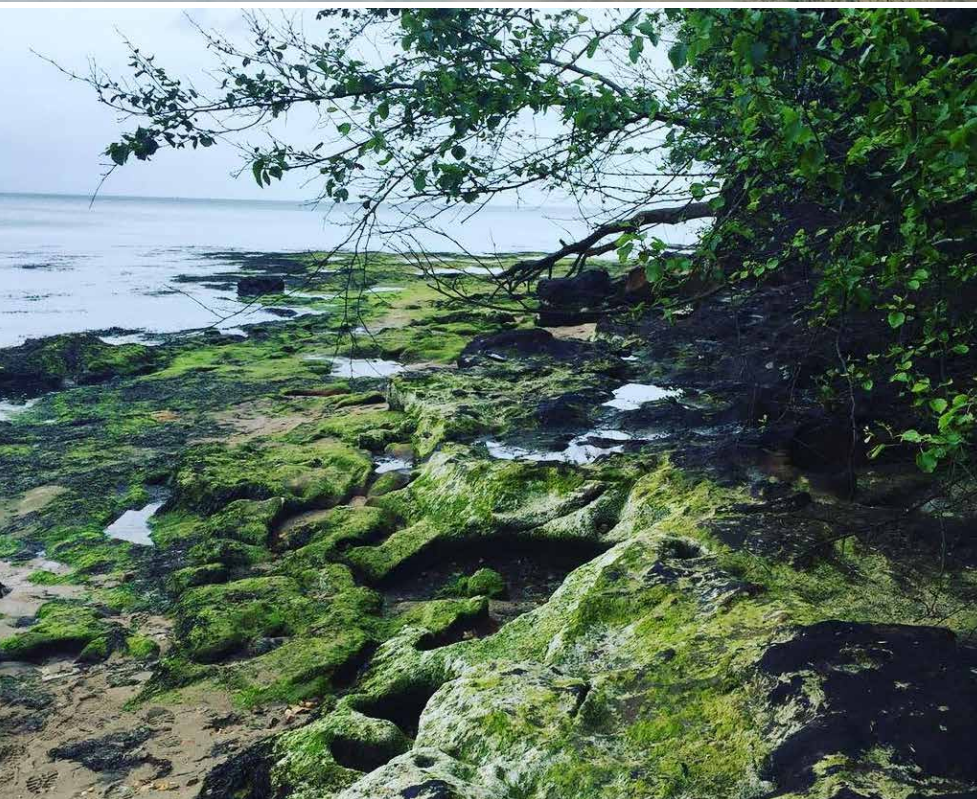




DAY 3. DORSET AND THE SOUTH WEST OF ENGLAND

Swanage & Corfe Castle

We will travel on the grandeur of the Swanage Steam Railway, in our own carriage with refreshments on board as we steam through the beautiful Dorset countryside to Corfe where the ruins of the castle stand guard over this fascinating town. The ruins go back to the 10th century and the whole area is of huge geological importance especially as it encompasses the Jurassic coast, famous for its prehistoric past and its numerous fossil hunting sites. This area is also the setting for a series of books called the Famous Five which were written by Enid Blyton and hold a special place in the hearts of many British children. Their adventures all took place around the many places we will visit. In their world the children were always the heroes and here, this is something which will never go out of fashion.



DAY 4. DORSET AND THE SOUTH WEST OF ENGLAND

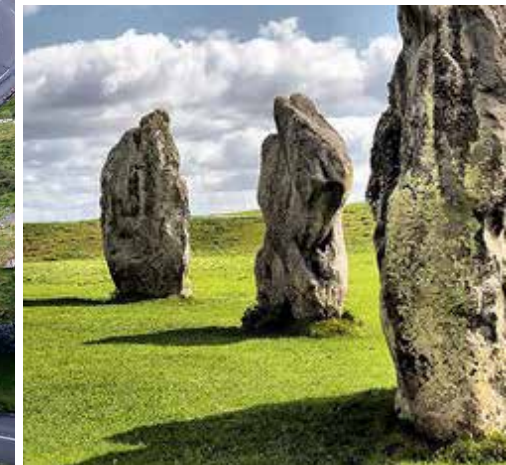
A choice of;

(A) CHEDDAR.

A visit to the geological marvel which is the Cheddar Gorge. This extraordinary natural fault and wildlife nature reserve is an area of outstanding natural beauty with amazing views over the river and surrounding countryside. As well as exploring the wild nature above ground our visitors will be provided with a guide to take them below ground and into the network of caves and natural caverns. An amazing experience at the end of which you will be awarded a certificate of completion.

(B) AVEBURY.

At the centre of a prehistoric complex on the Marlborough Downs in the lovely county of Wiltshire stands Avebury Stone Circle. The largest stone circle in the world which was erected 45000 years ago. Apart from the beauty and fascination of the stones themselves this is a lovely working village which is also a World Heritage Site, incorporating a beautiful 16th century manor house where visitors are encouraged to touch and experience the furnishings and fittings and objects which now represent the periods in the house from the 16th century to the present day.





DAY 5. DORSET AND THE SOUTH WEST OF ENGLAND

St. Giles House, Wimbourne

We invite our visitors to be guests of, and to meet the Earl of Shaftesbury at his stunning 400 year old family home. A private tour of the house by the Earl himself incorporating its history and family lineage with the possibility of lunch or supper with him. Dependent on dates there is also the opportunity to hear classical music recitals from world class Symphonic orchestra soloists. As the sun sets to music over St Giles House our guests will be provided with signed evidence of their meeting with The Earl Of Shaftesbury.

OR. BRYANSTON SCHOOL.

We can arrange a private small group tour of this excellent school and interaction with the pupils. A perfect way for our visitors to get the feel of a typical co-educational British boarding school.



DAY 6. DORSET AND THE SOUTH WEST OF ENGLAND

Return to London. Relax and departure.

Prices include all internal transport by luxury people mover. Helicopter transport can be arranged at extra cost. Translators are provided where necessary.

No hotels or meals are included but can be arranged by Dickins & Hawkes, as can diversions such as theatre tickets, exhibitions, etc using our extensive contact list.

PLEASE NOTE THAT ALL ATTENDANCES AND APPEARANCES BY MEMBERS OF THE ARISTOCRACY ARE SUBJECT TO THEIR AVAILABILITY.

Dickins & Hawkes would be pleased to arrange hotels, restaurant bookings, theatre tickets etc on request.

*R.S.V.P. Areteos Family Office
(852) 3577 8572
info@areteos.com*

